

Windows Installation

This document details installation of the single-user version of Design-Expert® software for Windows, version 11.

System Requirements

Minimum hardware and operating system requirements:

Component	Minimum
Processor	1 GHz
Hard Drive	250 MB free space
Memory	2 GB
Display	1024x768
Operating System	<ul style="list-style-type: none">• Windows 7 SP1• Windows 8/8.1• Windows 10

Note that Design-Expert 11 and higher are incompatible with Windows XP. Please consider upgrading to one of the operating systems listed above.

Starting the Installation

Note

If you are installing on a Mac, please refer to [these instructions](#).

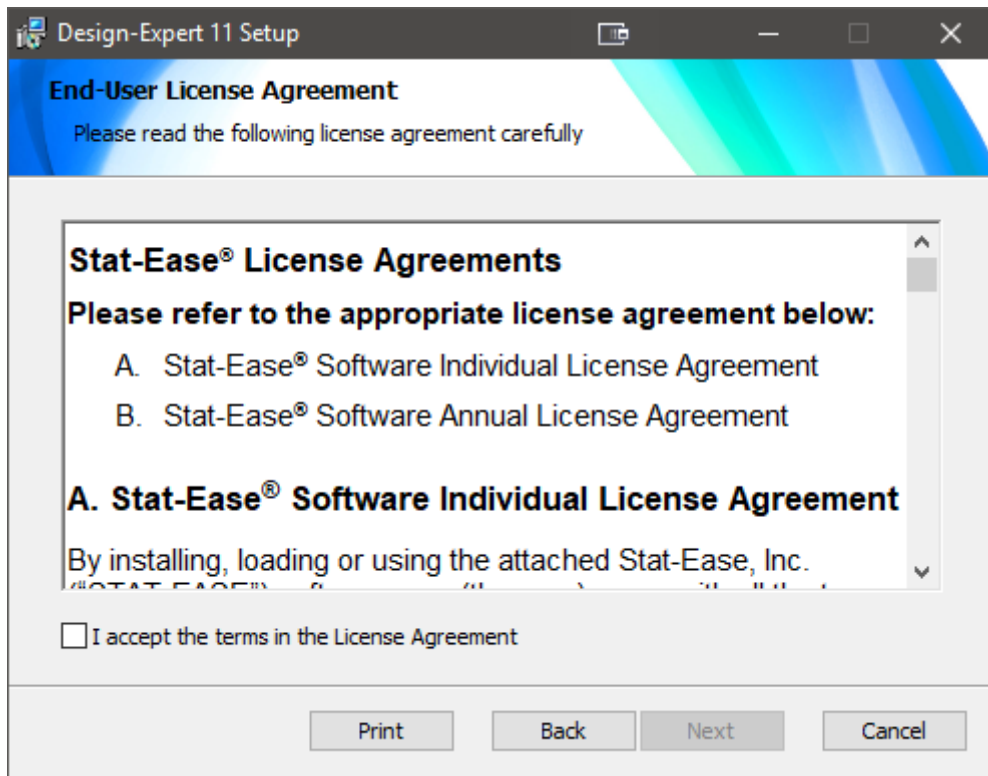
First you need to locate the installer for Design-Expert. If you downloaded the installer from our website it is probably in your **Downloads** folder. If you purchased a CD you will need to locate the CD drive in your file explorer. The installer file will be named as follows (the version numbers may vary depending on when you downloaded the software):

OS	Filename
32-bit	dx-11.1.0.0-x86.msi
64-bit	dx-11.1.0.0-x64.msi

If you're not sure whether your operating system is 32 or 64-bit, choose the 64-bit installer.

Double-click the installer to start the installation.

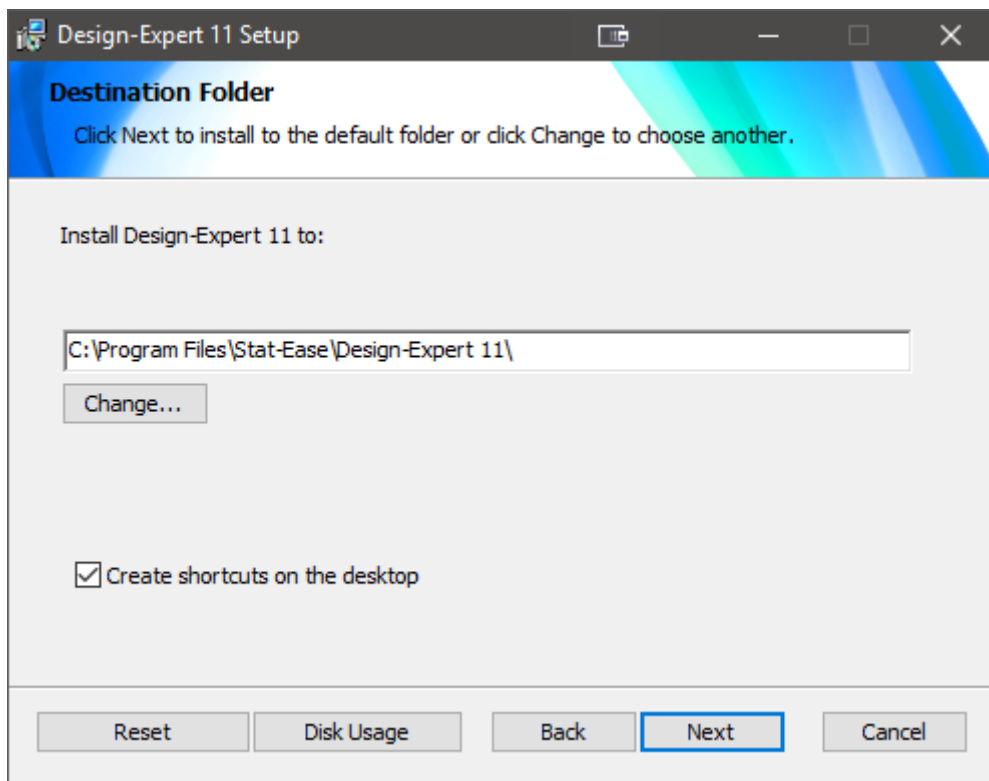
License Agreement



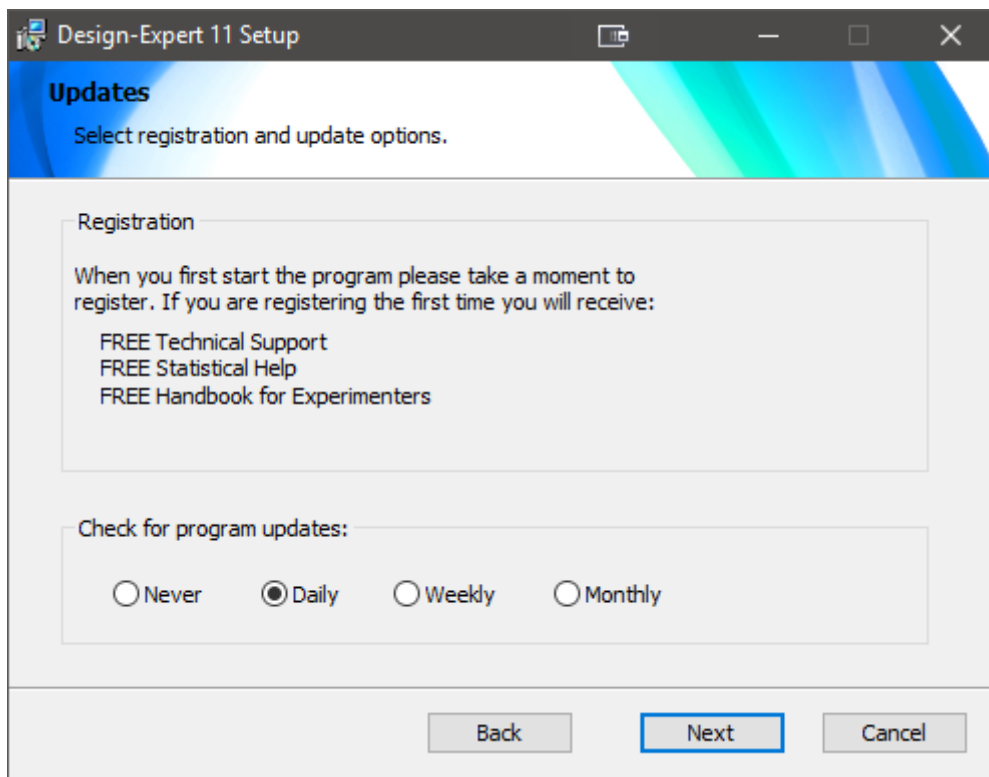
Once launched, the installation program loads and displays the license agreement shown here. Read the agreement. If you accept the terms, check the box labeled "I Accept..." and press Next to continue. If the terms are not acceptable to you, choose Cancel to abort the installation.

Installation Steps

Choose the destination folder or keep the default (recommended).



Consider registering the software online. You will be given an option to register the first time you install the software.

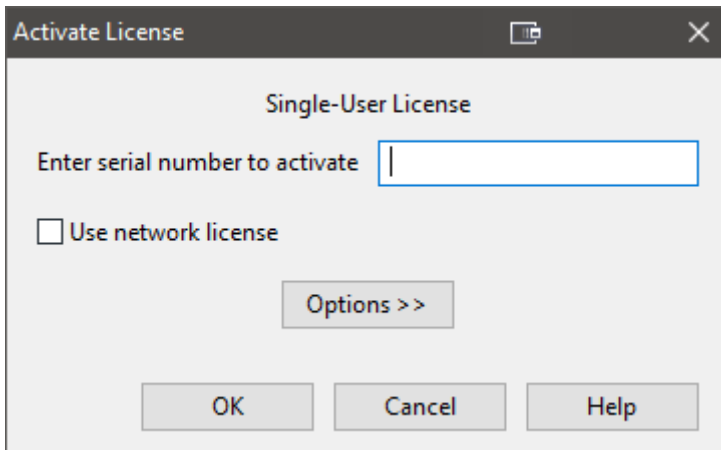


Running the Program

If you to have an icon placed on your desktop you can run the program with that, otherwise, open the Stat-Ease program group that resides within Programs in your Start menu. Simply click on the Design-Expert icon shown at right to execute the program.

Activation

The first time you run the program you will be asked to activate it by entering the 16- digit key we provided you. When you click OK, Design-Expert will connect via the internet to our activation server and authenticate the license.



If you know that you are using a network license, choose the Use network license and click on OK. See the [Network Installation documentation](#) for more instructions.

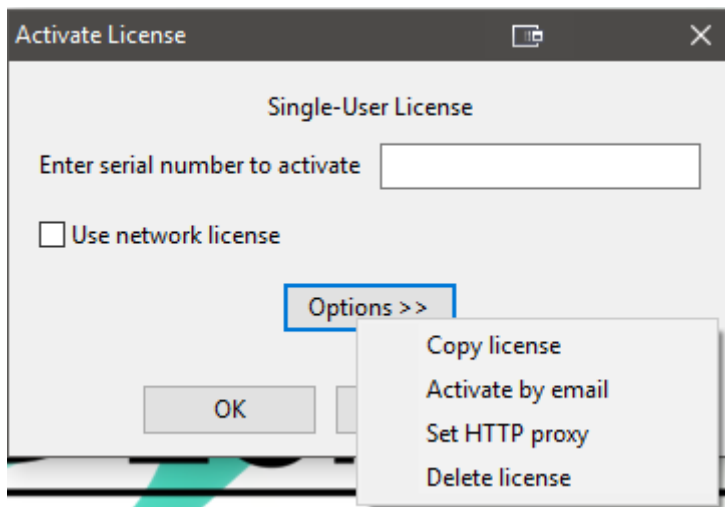
Manual Activation

If the program is unable to connect to the Stat-Ease activation server you will be offered the chance to manually activate the software. If you answer yes, the browser will be launched pointing to your account on our web site and you will be able to interact with the program and our web site to activate your software.

Log in and choose click the Manual Activation button. Copy the Host ID from the Copy License Text dialog in the program and paste it into the appropriate field on our web site then click OK. Copy the license text that appears on the web site and past into the multiline text field in the Copy License Text dialog then click OK. The program will save the text to a license file in the appropriate location on your computer.

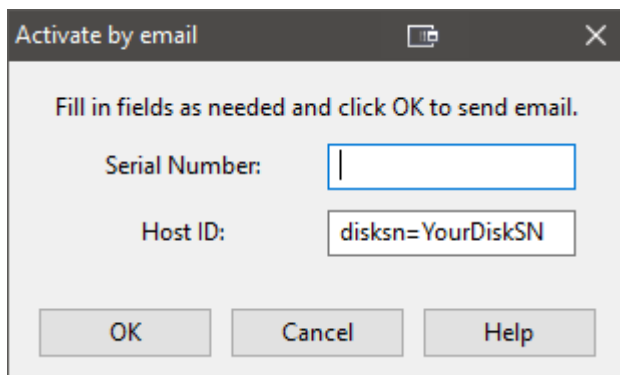
Activation Options

For unusual circumstances, there are four utilities available in the Options menu. These options allow for copying an already existing license file, activating by email for a specific Host ID, setting the HTTP proxy and deleting old license data.



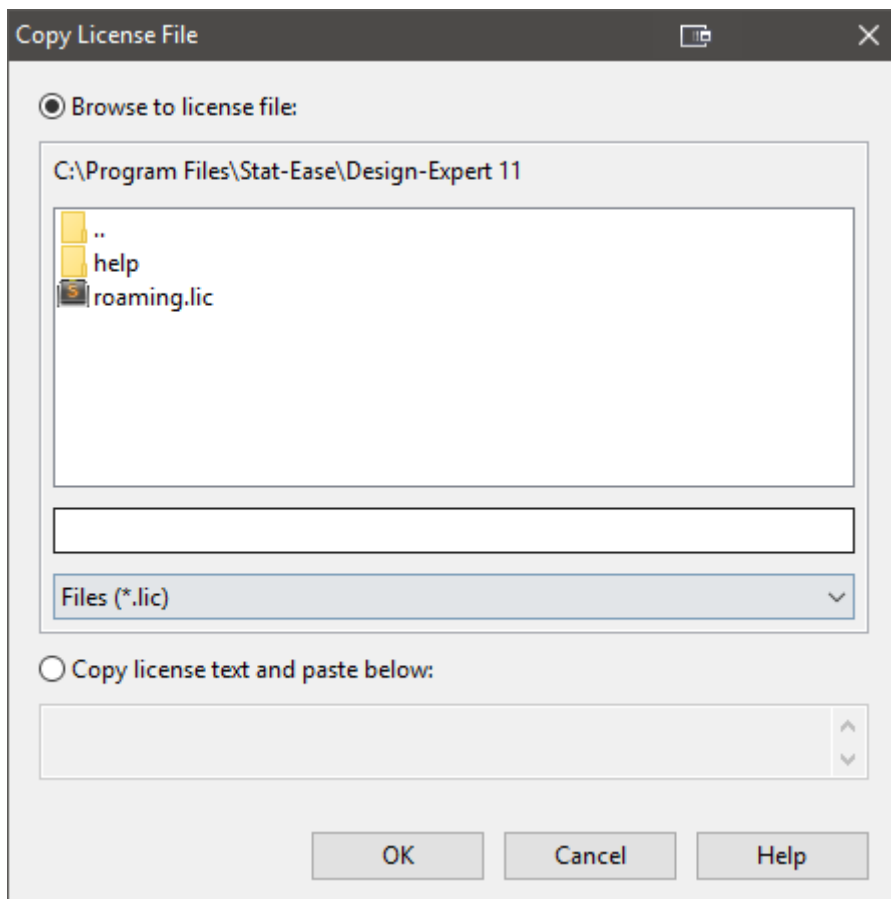
Activate by email

If your computer can't reach our server via the internet and you are unable to perform the manual activation procedure described above, you will need a license file sent to you. Click on the Options menu and choose **Activate by email** to send the 16-digit serial number and Host ID to us. If you do not have an internet connection, or if your email client fails to launch after clicking OK, email activate@statease.com. Include your serial number and the Host ID reported in the Activate by email dialog.



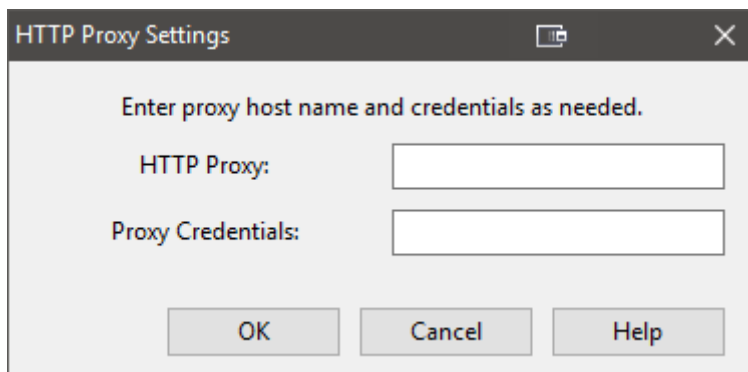
Copy license

We will reply to valid email activation requests with a license file that will activate your software. Use the **Copy license** option to copy the new license to your computer. Activate by browsing to the location of the license file then clicking OK. The license file will be copied to the proper directory on your system and the program will be activated.



Set HTTP proxy

If you know that your system has a proxy server, you can enter the host name of the proxy. Click on the Options menu and choose Set HTTP proxy. The host name should be entered in the form `host_name:port_number` if the port number used by the proxy is not the default 8080. If you need to set the proxy credentials, they can be entered in the form `user:password`. Note that only BASIC authentication type is supported.



How to Access Tutorials

The Tutorials are now included with the Help system. You can find them within the program via the **Help** menu. They are also available at statease.com.

Support

Before calling for support, be sure to look at:

- This documentation, particularly the “Program Hints and FAQ” section.
- The [Stat-Ease web site](#) for program updates and updated documentation.

To obtain program support from Stat-Ease, you must be a registered software owner or a user on a licensed network. The quickest way to get help is to call us, but email works particularly well because you can attach your data file. Please provide your Design-Expert version number and serial number before stating your question.

Here's how you can reach us:

Website: statease.com

Email: support@statease.com

Phone: (612) 378-9449

We provide limited free help of a statistical nature. While it never hurts to ask, we may suggest that you purchase some statistical consulting. Statistical support requires a network license, or a single-user license that has paid annual support and maintenance (ASM) dues. You can contact statistical support at stathelp@statease.com.